

Panawall

RAPID INSTALL WALL PANEL SYSTEM

TRUE
STORY



DURABLE, WATER-PROOF, ANTI-
MICROBIAL, CLASS "A" FIRE
RATED, CHEMICAL RESISTANT.

**Real Wood, HPL, Phenolic,
Glass, Metal and Acoustic
panels all on the same
system**



Beautiful, Functional, Durable and QUICK to install. Panawall is suitable for virtually any wall condition

Panawall is a non progressive aluminum frame system that enables the attachment of virtually any panel type with multiple thicknesses, shapes and finish characteristics in the same elevation.



Quick, simple, clean and durable.
Panawall® wall panel system.



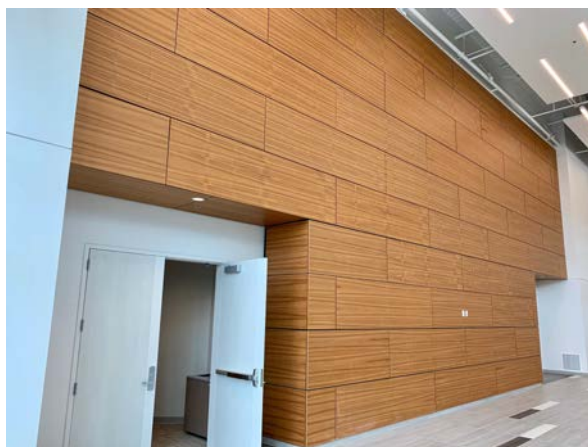
The project featured in this brochure is CHI St. Vincents Hospital in Little Rock, AR. The panels are all natural Real Wood Veneer Teak QC.

The system options include stand-off arrangements allowing the panels to be pushed away from the wall to accommodate utilities and services behind the panels and back lighting for up or down lights. Panels with sound absorption are also available on this system.

Premium Architectural wall panels require precision alignment and Panawall's horizontal frame is a smart solution to deliver perfect installation in half the typical install time. Multiple reveal and panel edge options provide a custom appearance to an otherwise modular solution. The result is a panel system tailored to the unique needs and aesthetic demands of your project.

All the panels are precision machined providing the fastest and most accurate installation of panels. Architectural Panels on the Panawall system comprise 3/4"(18mm) MDF substrate as standard and are available from 3/8" (10mm) to 4" (100mm) thick.

Projections options of 5/8" (15mm) or 1-1/4" (30mm) allow for sound attenuation when utilizing our acoustical panels.



Panawall panels are available in Real Wood Veneer, HPL, CompactWood®, Phenolic, Acoustical and Glass.

Custom surfaces are also available. Acoustical options are available in HPL and Real Wood Veneer. Custom Digital designs can be developed in house.

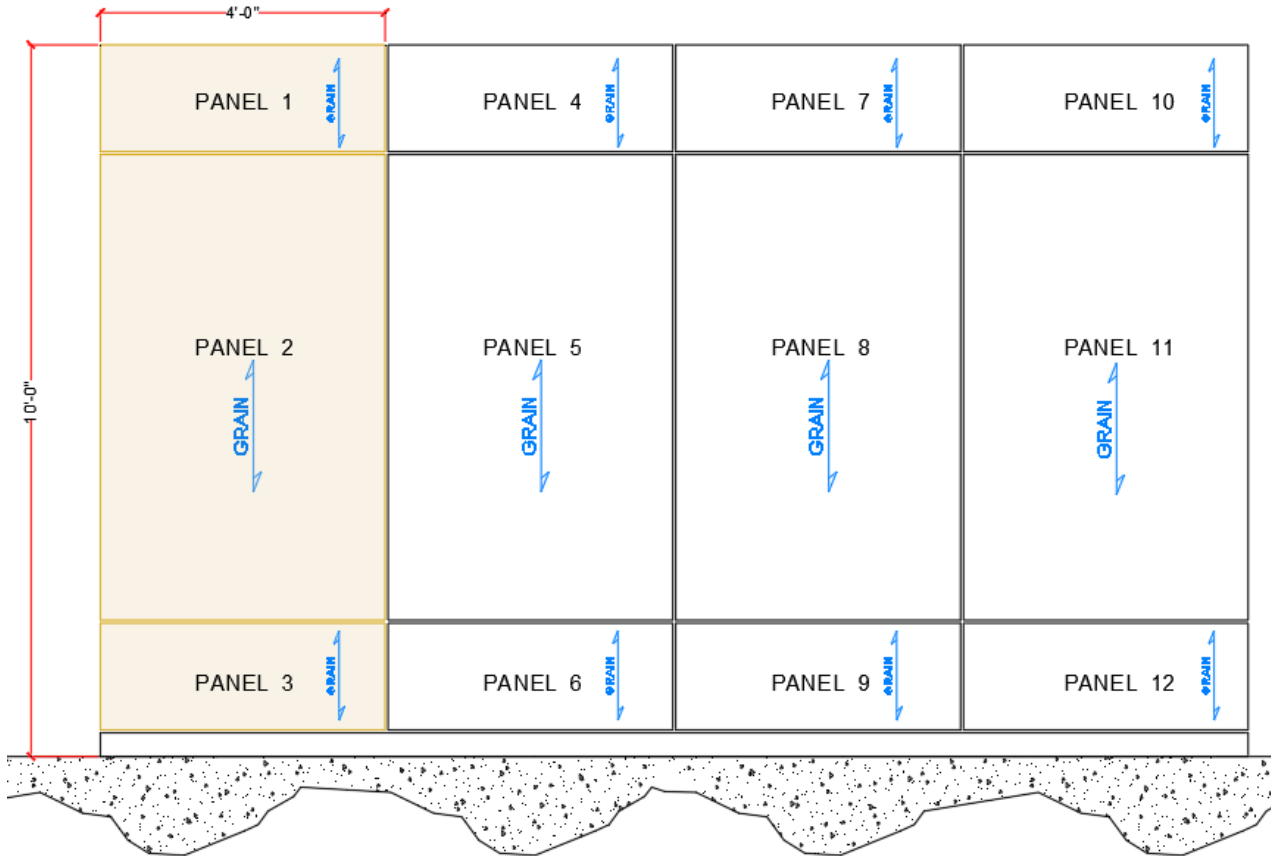
Reveals can be upto 1" wide and can be finished in matching or contrasting finishes. Metal & backlit reveals are an option.

Key Features include :

- Fast to install
- Predrilled Panels
- Multiple finishes in the same elevation
- Multiple thicknesses in the same elevation
- Acoustical Options
- Projection Options
- Wood,HPL,CompactWood®,Phenolic,Glass,Metal

**FAST EASY INSTALL WITH
PREDRILLED PANELS**

Multiple panel layouts and reveal options make designing elevations a breeze



Standard 3 Panel Vertical Modules, Uniform Reveals

Square edge panels can be organized either vertically or horizontally with either uniform or staggered reveals.

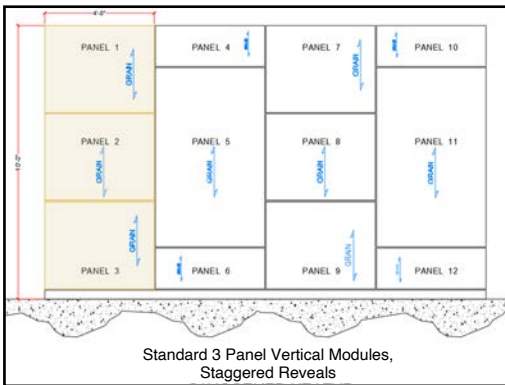
Panawall is a non-progressive aluminum frame system that enables the attachment of virtually any panel type with multiple thicknesses, shapes and finish characteristics in the same elevation.



Quick, simple, clean and durable.
Panawall® wall panel system.

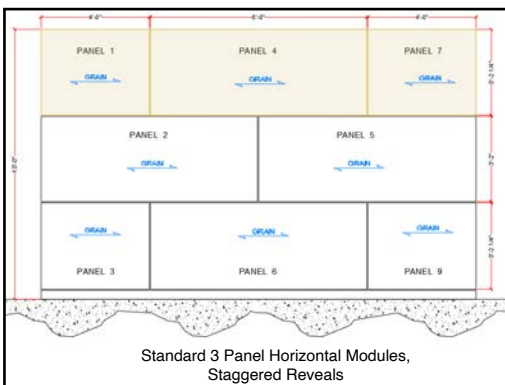
844-307-9571 www.millworkusa.com

Typical Layouts



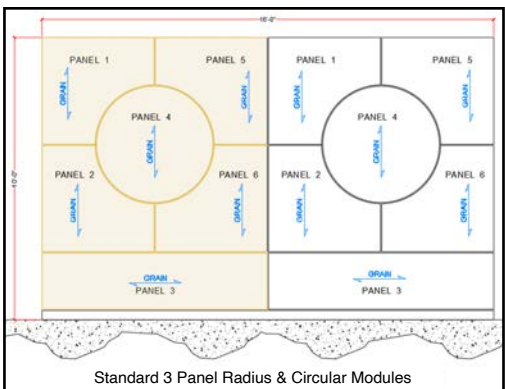
Vertical Staggered Layout

Staggered reveals in vertically oriented panels add a sense of height to the elevation.



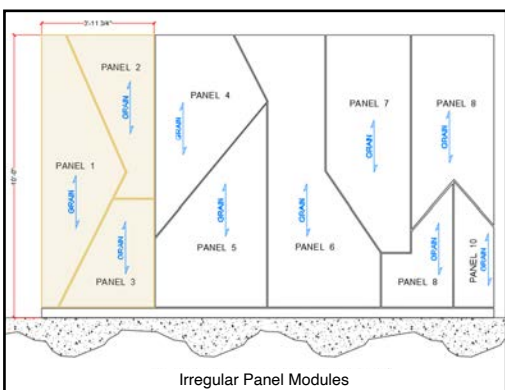
Horizontal Staggered Layout

Staggered reveals in horizontally oriented panels elongate the elevation to provide a feeling of spaciousness



Radius Edge Layout

Radius edge panels open up the design process, enabling you to create soft edges and circles.



Irregular Panel Layout

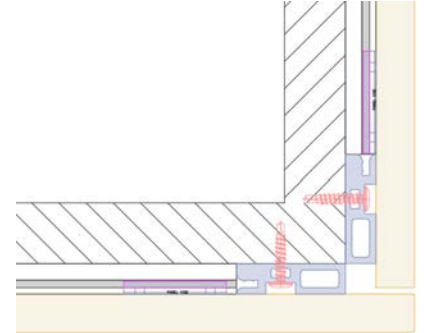
Irregular shaped panels can enhance the custom look of an elevation. Panels are available in virtually any shape and configuration .

**FAST EASY INSTALL WITH
PREDRILLED PANELS**

Typical Corner Details

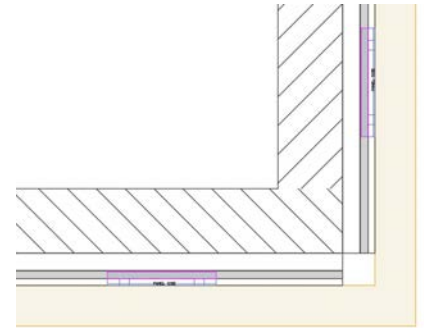
Standard External Corner

This is the default corner with a reveal on one side of the abutment.
The reveal width is 1/2" as standard. Other reveal widths can be created and a closed abutment is achievable.



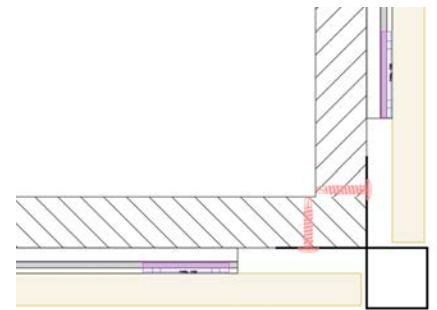
Assembled External Corner

Stronger than a traditional mitered corner, assembled corners provide a mitered look and are delivered assembled to provide a continuous vertical corner. Legs can be any size upto 12" wide.



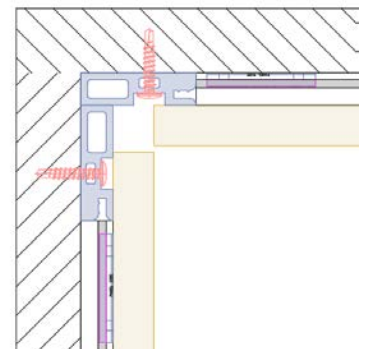
Reinforced External Corner

Reinforced external corners are supplied in stainless steel or powder coated aluminum. This is a good option in high traffic areas where corners are prone to knocks.



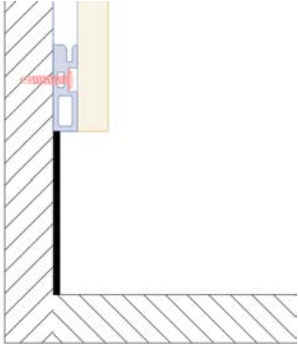
Standard Internal Corner

Internal corners are manufactured with equal reveals on each side of the corner. Closed corners or tight abutments are available.



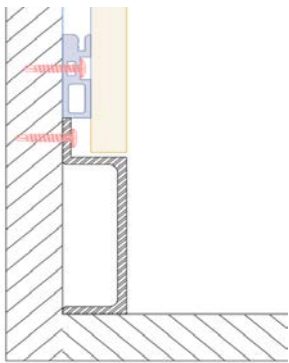
Quick, simple, clean and durable.
Panawall® wall panel system.

Typical Abutment Details



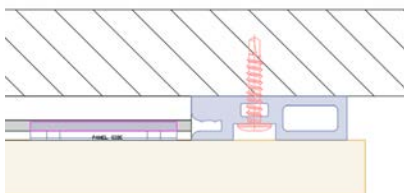
Standard Base Abutment

The standard base abutment allows for the horizontal member to sit on the base and the panel to float partially over it. (The base is generally supplied by others but is an available option.)



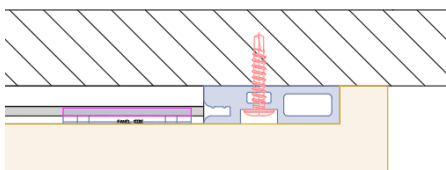
Reinforced Base Abutment

Stainless steel base option provides a highly durable wall protection element. Ideal for airports, convention centers and other high traffic areas.



Standard Termination

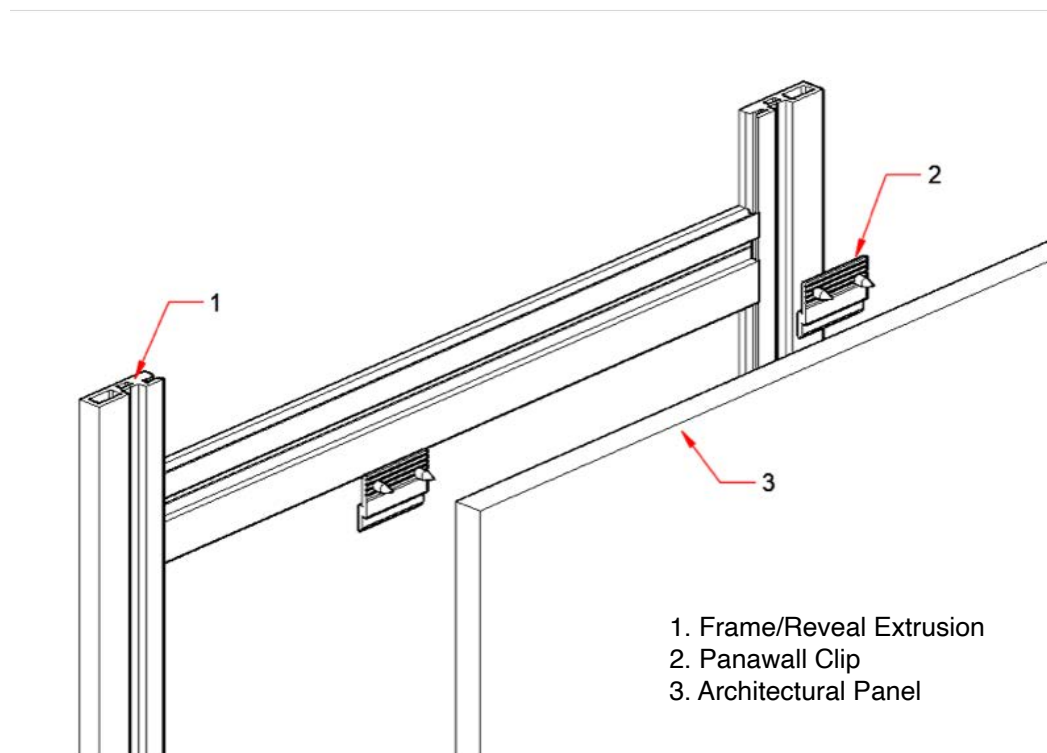
Terminations can be “flush” or “set-back” as illustrated here.



Assembled Termination

Assembled Terminations provide the look of a mitered corner.

**FAST EASY INSTALL WITH
PREDRILLED PANELS**



Specification

- Standard Vertical Panel Modules are 2', 3', 4' and 5' wide x 8', 10' and 12' high.
- Custom sizes and shapes available
- Modules can be uniform or staggered.
- Frame thickness 5/8" or 1-1/4"
- Acoustic or Non Acoustic
- Real Wood, CompactWood®HPL, Phenolic, Glass, Metal, Fabric Wrapped, Vinyl Covered

Panawall®

Distributed By